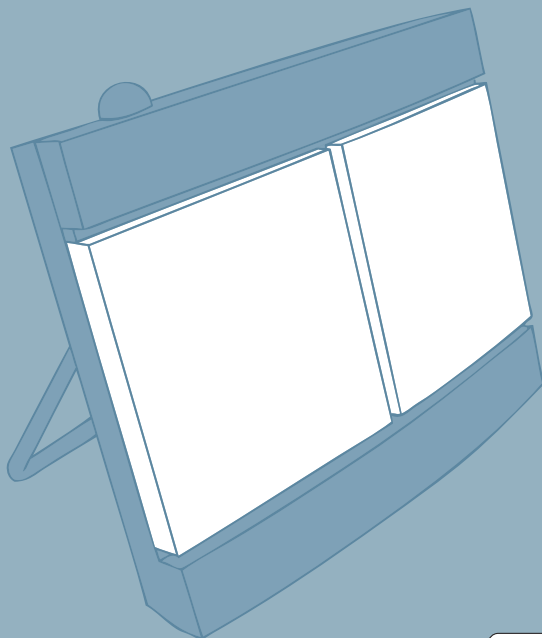


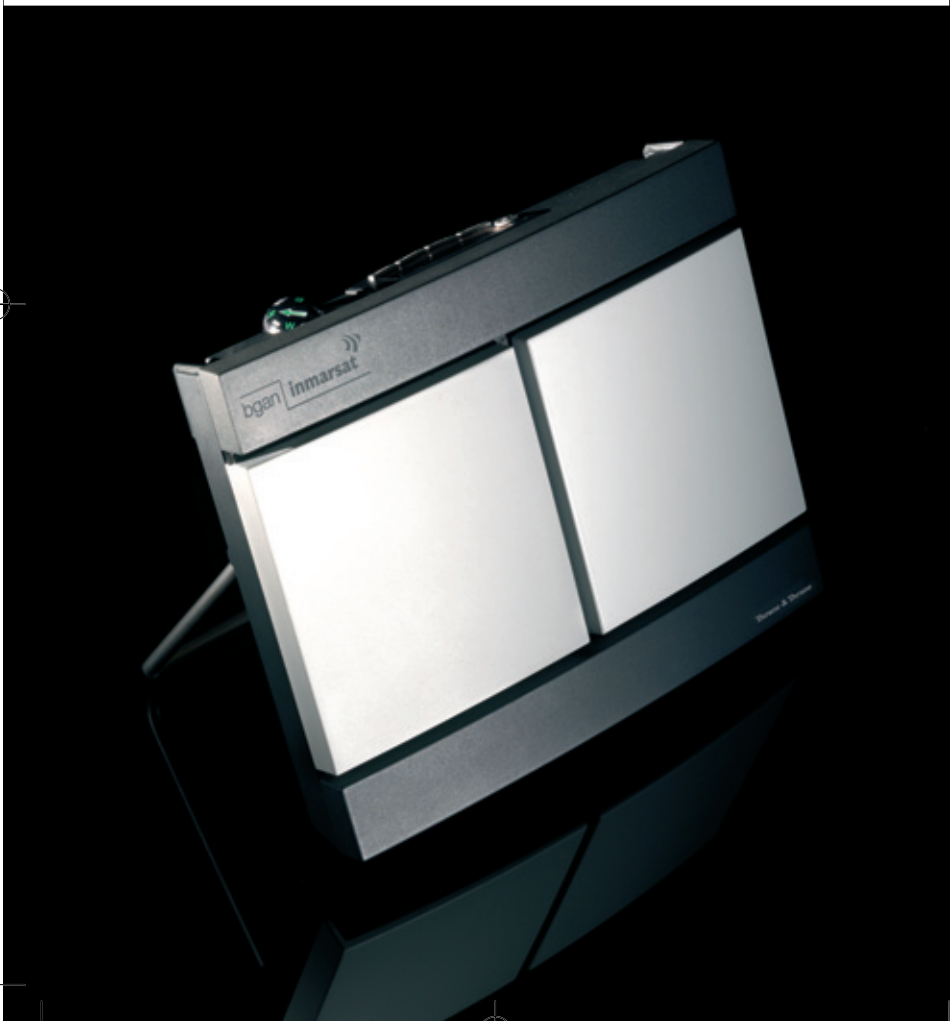
# EXPLORER™ 300

## GETTING STARTED



TT-98-123728-A - 06.06 OgilvyOne

# Thrane & Thrane



## GETTING STARTED

Congratulations on the purchase of your EXPLORER™ 300.

Before you start, please check that the following items are present:

- EXPLORER™ 300 terminal with built-in antenna
- Battery
- AC/DC adapter
- LAN cable
- Getting Started kit including Quick Guide, electronic manual, etc.

### 1 Insert the SIM card (provided by your Airtime Provider)

a. Insert the SIM card into the SIM slot and press gently until it snaps.



b. Slide the lock to secure the SIM card.



### 2 Insert the battery

Insert the battery and press gently until it locks.

NOTE: You can use the battery as power source, or connect the DC input to one of the following power sources:

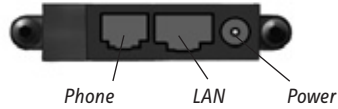
- 100-240 V Mains using the AC/DC adapter
- 12 V DC in a car using the car charger cable available from Thrane & Thrane



For further information, refer to the User Manual.

### 3 Connect the cables

Connect the cables to the relevant connectors on the EXPLORER™ 300. The connector panel is located on the side of the EXPLORER™ 300.



One connector, the Bluetooth phone charging connector marked DC OUT, is placed at the back of the EXPLORER™ 300.

### 4 Switch on the EXPLORER™ 300

Push the power button next to the display and hold it for 1-2 seconds until the green power indicator lights up.

### 5 Enter the PIN code

- When you are asked for a PIN code, press **OK**.
- Press ▼ or ▲ a number of times until the first digit is correct.
- Press **OK** to go to the next digit.  
The previous digit is indicated by a \*.
- After pressing OK to enter the last digit, press OK again to apply the PIN code.
- If you want to turn off the pointing sound, press ▼ or ▲.



### 6 Point the antenna

**Important!** To obtain optimum bandwidth and operating time, adjust the position of the antenna with great precision. Do not adjust the antenna position until all cables are connected and the PIN entered.

- a. Use the built-in compass of the EXPLORER™ 300 as reference, rotate and tilt the antenna so that it points in the approximate direction of the BGAN satellite.



- b. Use the displayed signal strength and the pointing sound to find the highest possible signal strength, while slowly rotating and tilting the EXPLORER™ 300.
- c. Press **OK** when you have obtained the highest possible signal strength.



The EXPLORER™ 300 now starts to establish a connection to the BGAN network.

The display shows the progress as follows:

- **SEARCHING:** The EXPLORER™ 300 searches for the network operator.  
Note that the search procedure can be very short, so you may not see this text.
- **REGISTERING:** When the network operator is found, the display shows REGISTERING to show that the EXPLORER™ 300 is registering itself on the network.
- **READY:** The EXPLORER™ 300 is registered on the network.

You are now ready to make phone calls, browse the Internet or check your e-mails, send files, run a video conference and much more.

## **MAKING A CALL FROM THE EXPLORER™ 300**

If you are using a Bluetooth handset, the handset must be paired and placed close to the EXPLORER™ 300. For information on pairing, see the section **BLUETOOTH PAIRING** at the end of this document.

To make a call from the EXPLORER™ 300, dial

**00 <country code> <phone number>** followed by # or off-hook key.

Example: To call Thrane & Thrane in Denmark: (+45 39 558800), dial 00 45 39 558800 followed by # or off-hook key.

## **MAKING A CALL TO THE EXPLORER™ 300**

To make a call to the EXPLORER™ 300, dial

**+870 <mobile number>**

- + is 00 for Europe and many other countries.
- To see your mobile numbers, use the display menu system and select **PROPERTIES > MOBILE NUMBERS**.

## CHOOSING AN INTERFACE FOR DATA CONNECTION

The EXPLORER™ 300 has two types of interface for data connection: LAN interface and Bluetooth interface.

The following table shows some characteristics of each interface, to help you choose the right interface for your application.

Interface	Power Consumption	Range
LAN	High	Up to 100 m of cable
Bluetooth	Medium	Wireless connection. Up to 25 m depending on the transmitter in the computer and on the transmission conditions.

## MAKING A LAN CONNECTION

To make a LAN connection, simply connect the LAN cable between your computer and the LAN connector on the EXPLORER™ 300, and start up the EXPLORER™ 300 as described in the beginning of this document.

As soon as the display of the EXPLORER™ 300 shows READY, the connection is established automatically.

You are now ready to browse the Internet, check e-mails, send files etc.

NOTE: For information on configuration, refer to the User Manual.

## **MAKING A BLUETOOTH DATA CONNECTION**

To make a Bluetooth connection, place the computer close to the EXPLORER™ 300 and start up the EXPLORER™ 300 as described in the beginning of this document.

If the computer is already paired with the EXPLORER™ 300, the connection is established automatically when both devices are ready and have discovered each other. Note, however, that if your Bluetooth connection is defined as a dial-up connection, you have to open the dial-up connection to activate the connection.

You are now ready to browse the Internet, check e-mails, send files etc.

**NOTE:** For information on configuration, refer to the User Manual. For information on Bluetooth pairing, refer to the next section.

## BLUETOOTH PAIRING

NOTE: This section only describes how to pair devices in which you can enter a passkey. For information on devices in which you cannot enter a passkey, such as headsets, refer to the User Manual.

To pair a Bluetooth device, do as follows:

1. Start up the EXPLORER™ 300 as described in the beginning of this document.
2. Place your Bluetooth device close to the EXPLORER™ 300.
3. On your Bluetooth device, search for new devices and select the EXPLORER™ 300 when it is found.

The default Bluetooth name of the EXPLORER™ 300 is EXPLORER 300.

If there is more than one EXPLORER™ 300 in the list, you can use the MAC address to locate the correct one. To see the MAC address of your EXPLORER™ 300, enter the display menu system and select

**PROPERTIES > TERMINAL > HARDWARE > MAC.**

4. On your Bluetooth device, enter the passkey of your EXPLORER™ 300.

The default passkey is the serial number of your EXPLORER™ 300.

To see the serial number, look at the label on the back of the EXPLORER™ 300 or enter the display menu system and select

**PROPERTIES > TERMINAL > HARDWARE > UNIT SER. NO.**

The new Bluetooth device is now paired and ready to communicate with the EXPLORER™ 300.

NOTE: Maximum 2 devices can be paired with the EXPLORER™ 300. If you have already paired 2 devices you have to unpair a device before you can pair a new one. For information on how to unpair devices, refer to the User Manual.

## ACCESSING THE WEB INTERFACE

To access the web interface, do as follows:

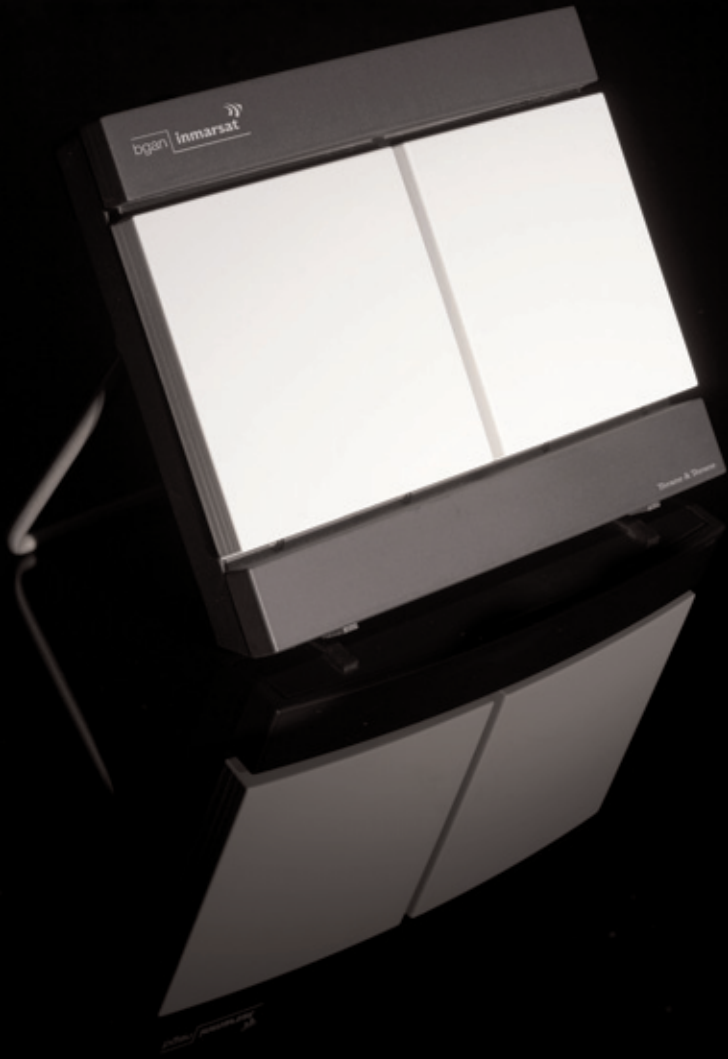
1. Connect a PC to the EXPLORER™ 300.
2. Start your Internet browser.
3. Enter the IP address of the web interface.

The default IP address is 192.168.0.1.

To see the IP address in the menu system, select

**PROPERTIES > TERMINAL > IP ADDRESS.**

The web interface now opens in your browser. For information on how to use the web interface, refer to the User Manual.



TT-98-123728-A - 06.06 OgilvyOne